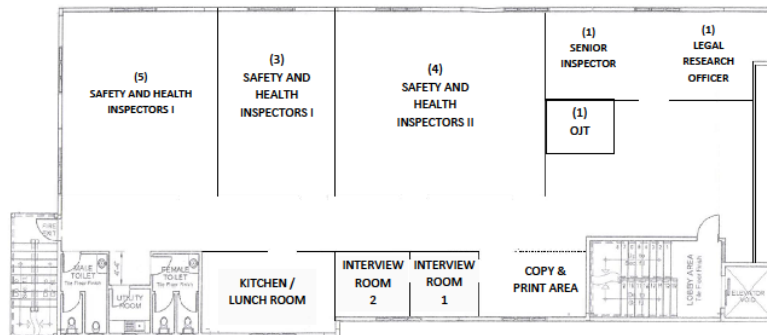
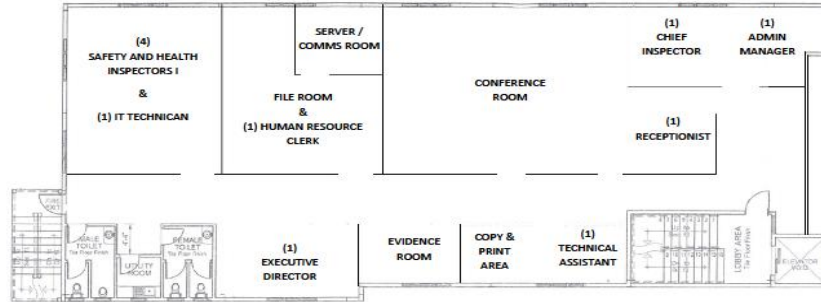


Questions & Answers -

Site Visit: ALL RFPs/RFQs/RFIs

- Is there a Floorplan for the new South Office with the staff included?
 - **To aid with the completion of your submissions, please see the floorplan and hereunder.**



- When will the Tobago Site Visit occur?
 - This date will be determined after submissions of all RFPs/RFQs/RFIs.
 - Tobago Office is a much smaller location: 1,400 square feet approx.
 - To aid with the completion of your submissions, please see the office and compound floorplans and hereunder.

OSHA Tobago Office

Lot #2 Glen Road Scarborough Tobago

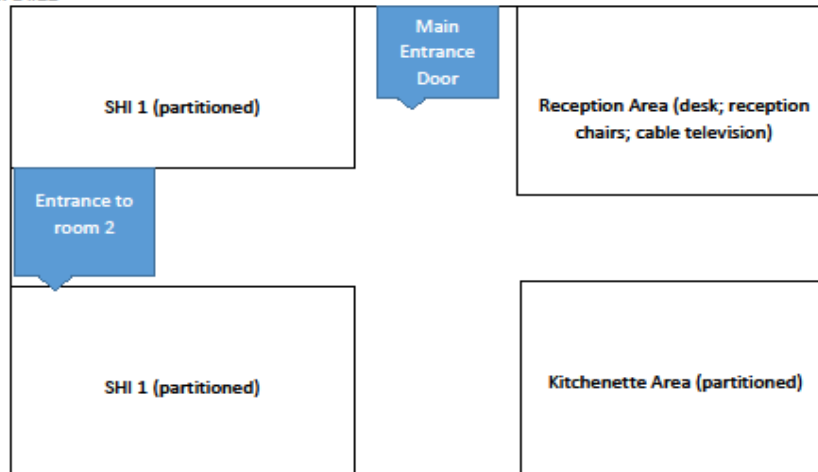
Relocation to Front Offices on same compound (CCLCS)

Two rooms - approximately 1400sf

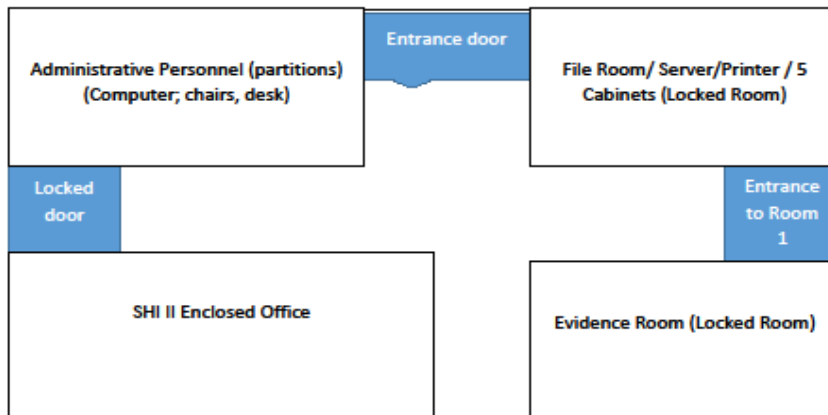
Room One #22 approximately 700sf - Wheel chair access required, Two SHI s office (Cubicles), Reception Area and Kitchenette

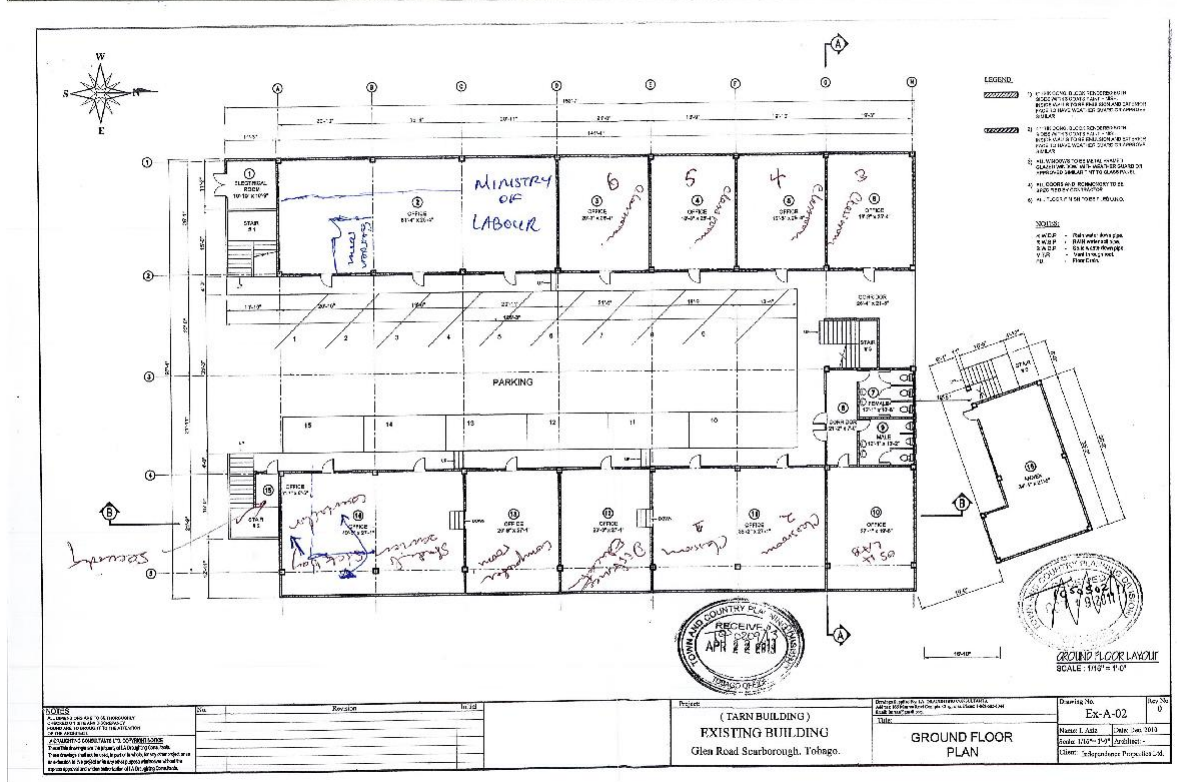
Room 2 # 23 approximately 700sf – SHI 11 Enclosed office, Evidence Room, File Room and Administrative Personnel (pending)

Room 1 #22



Room 2# 23





- How many staff will be at the location(s)?
 - South Office: Twenty-Six (26) staff members; and for the
 - Tobago Office: Five (5) staff members.